



**Lufthansa**  
**Aviation Training**

Train smart. Fly safe.



# Zurich.

## Your Training Guide.

## Map

Lufthansa Aviation Training Center	3
------------------------------------	---

## Directions

By Aircraft	4
By Car	5
By Public Transport	6

## Training Facilities

Overview	7
----------	---

## Services

Access to the Building and Training Devices	8
Services of Lufthansa Aviation Training	9
Food and Beverages	10
Lockers, Parking, First Aid	11
Customer Satisfaction Management	12

The Lufthansa Aviation Training Center Zurich is located near Zurich Airport.

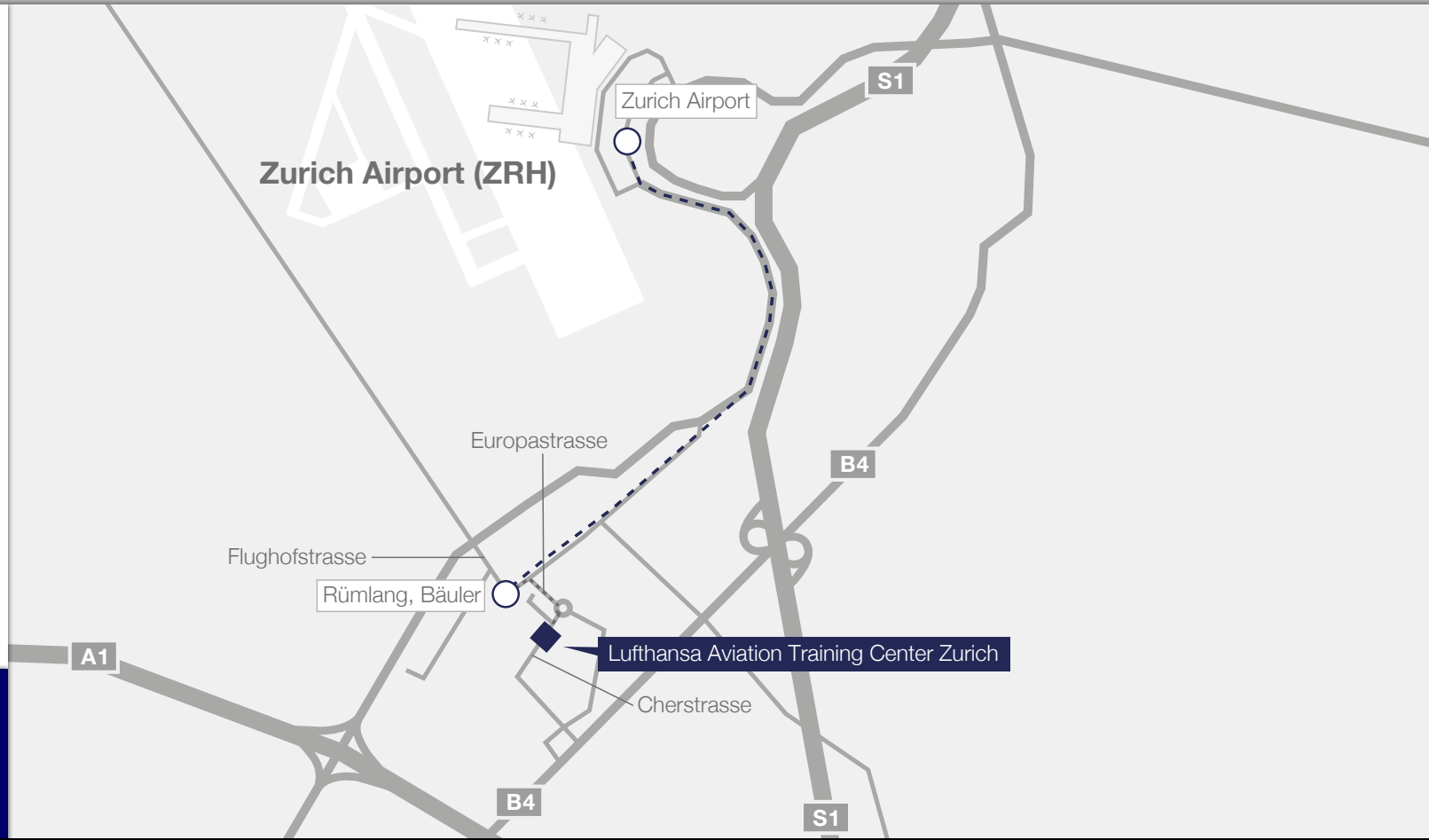


# Directions / By Aircraft

You can take a taxi from the terminal to the Training Center at Cherstrasse 1, Opfikon.

Alternatively, you can take the tram (line 10 or 12) from the airport's bus/tram terminal to "Rümlang, Bäuler" (3 stops). From there, it is a five-minute walk to the Training Center.

- Tram station
- - - - By tram 10/12
- - - - By foot



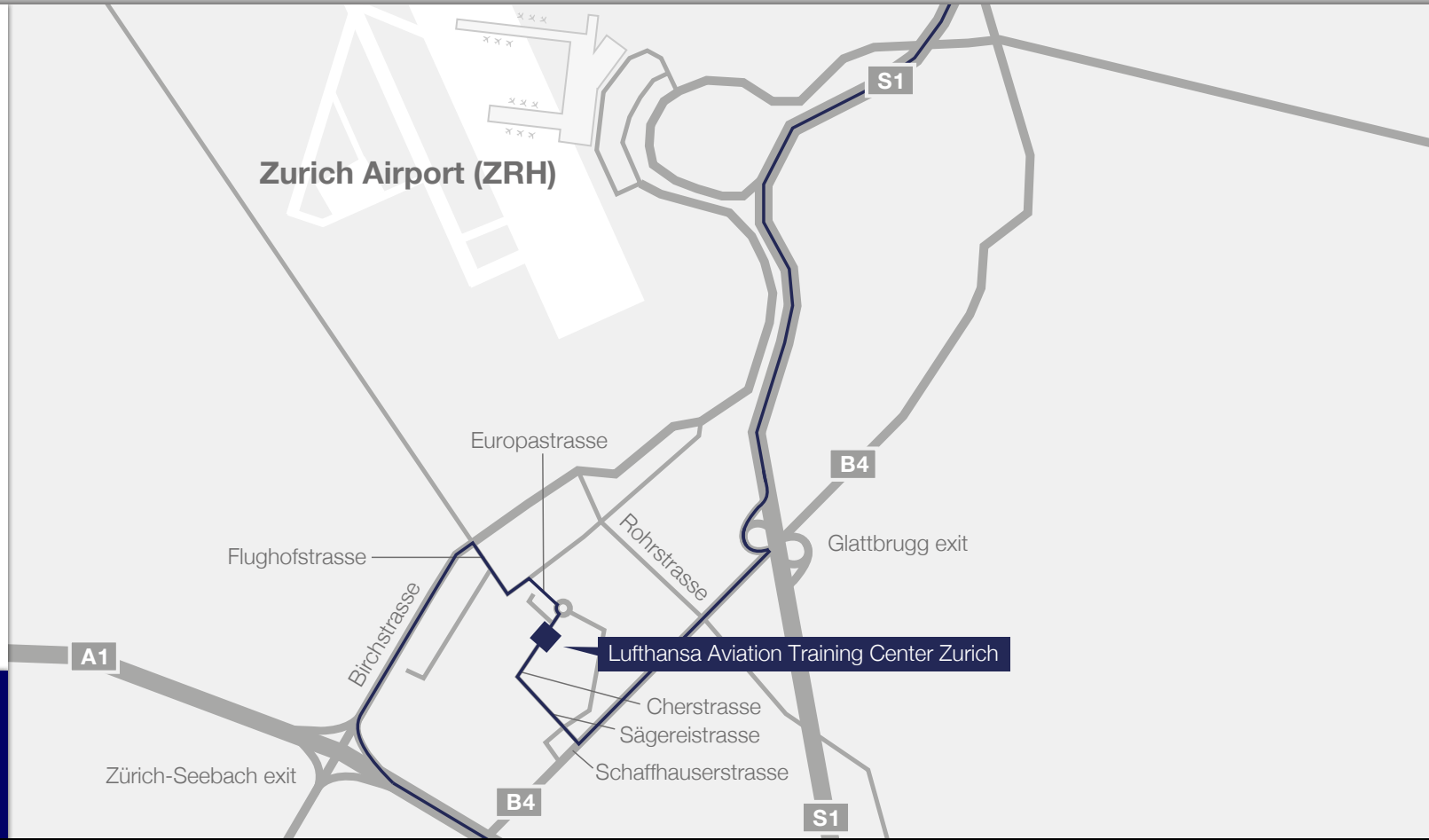
More information:

- By Car** > 5
- By Public Transport** > 6

Lufthansa Aviation Training is located close to the A1 motorway towards Berne/Basel. The closest exits are “Zürich Seebach” and “Glattbrugg”.

Please note that there is only a limited number of parking spaces available. It is advisable to use public transport, unless your training takes place at night. In this case, a parking spot will be provided for you on request.

— By car



More information:

**By Aircraft** > 4

**By Public Transport** > 6

## From downtown Zurich to LATC ZRH:

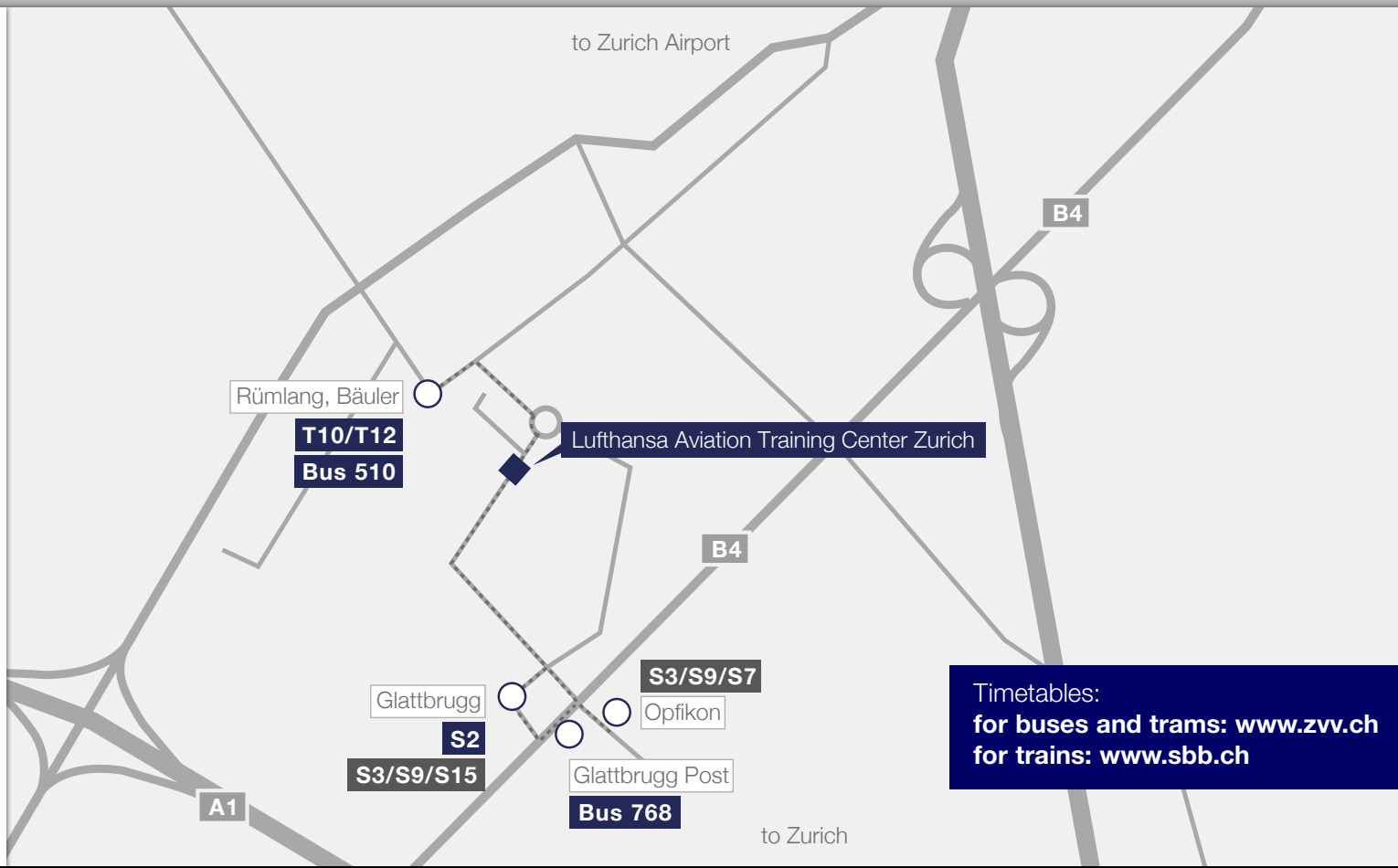
- Train S3, S9 and S15 to “Glattbrugg” (about 10 min)
- Train S3, S9 and S7 to “Opfikon” (about 15 min)

## From Zurich Airport to LATC ZRH:

- Tram 10/12 (5 min) and Bus 510 (11 min) to “Rümlang, Bäuler”
- Bus 768 to “Glattbrugg Post” (7 min)
- Train Connections: S2 to “Glattbrugg” (11 min)

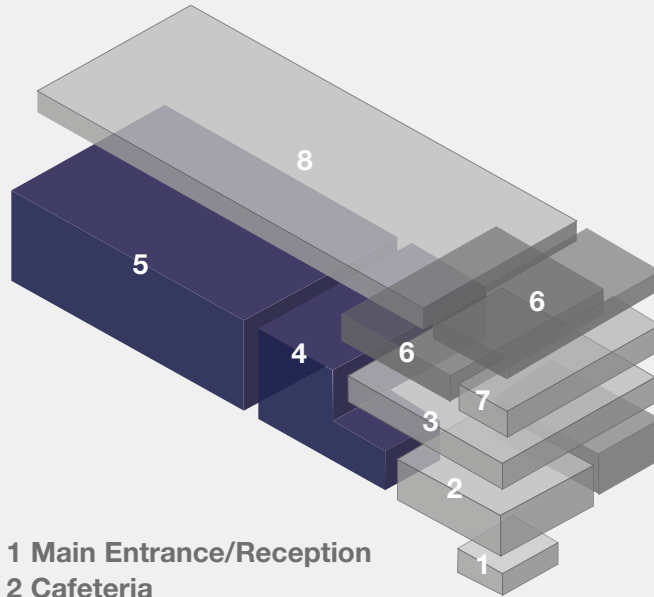
There are direct connections between 05:39 and 00:09, also on weekends and public holidays.

- Train/Bus station
- From Zurich
- From Zurich Airport
- By foot



Timetables:  
for buses and trams: [www.zvv.ch](http://www.zvv.ch)  
for trains: [www.sbb.ch](http://www.sbb.ch)

Covering an area of 11,000 square meters, the Lufthansa Aviation Training Center in Zurich unites the complete infrastructure of an aviation training center under one roof, including the Flight School and Assessment Center. Six state-of-the-art full-flight simulators with technical rooms and flexible work stations offer everything that meets today's requirements for leading-edge airline training. In another hall, there are five fully equipped cabin trainers for cabin crew training. In addition, there are workshop rooms, focus, training and briefing rooms as well as a 24/7 cafeteria and catering area, which can be used for mobile work.



- 1 Main Entrance/Reception**
- 2 Cafeteria**
- 3 Cabin Training**
- 4 CEET**
- 5 Full-Flight Simulators**
- 6 Workspaces**
- 7 Assessment Center**
- 8 Class and Briefing Rooms**

### Safety, Medical, Emergency

- 5 Cabin Emergency Evacuation Trainers (CEET) (E170, A220, A320, A330/340, B777-300)
- 1 Emergency Parcours
- 5 Door Trainer
- 1 Raft
- 1 Flight Deck Access Trainer
- 5 Slides
- 1 Fire Trainer
- 1 Medical Trainer, Medical Parcours

### Flight Crew

Full-Flight Simulators (starting in 2020):

- 1 Airbus A320-200
- 1 Airbus A220 (former Bombardier C-Series)
- 1 Airbus A330-300/A340-300
- 1 Boeing B777-300ER
- 1 Embraer ERJ-145
- 3 FNPT Diamond DA-42 TDI
- 1 A320 FTD
- 3 Integrated Procedure Trainers
- 1 E2 FFS and IPT

### Cabin Crew

- 2 Service Trainers
- 1 Service Parcours
- 1 Hair & Beauty room

## **ACCESS AND CHECK-IN**

Access to the building is granted by speed gates with an entitled company badge or a QR-Code, which is issued after online registration via the following link:

[www.lufthansa-aviation-training.com/e-services/](http://www.lufthansa-aviation-training.com/e-services/)

Additionally, to access the simulators, an entitled badge or a check-in for the session are needed.

For check-in please contact our reception upon arrival or use the check-in terminal in the reception area outside opening hours. Please visibly carry your company badge on you at all times inside the building.



## **GROUP SERVICES OF LUFTHANSA AVIATION TRAINING**

24/7 Helpline

**Phone: +49 69 696 72 444**

**E-mail: [info@lat.dlh.de](mailto:info@lat.dlh.de)**

## **RECEPTION DESK ZURICH**

You concentrate on your training; we handle everything else. Our reception desk is available for you to issue visitor badges, book a taxi or provide useful tips and information during your stay at LATC ZRH.

**Opening hours: Mon–Fri 7:45 a.m. to 5:00 p.m.**

**Phone: +41 44 564 9000**

**E-mail: [empfang\\_zrh@lat.dlh.de](mailto:empfang_zrh@lat.dlh.de)**

## **INTERNET/WLAN**

Corporate and public WLAN is available throughout the building.

## **CAFETERIA/SELF-CATERING/VENDING MACHINES**

If you fancy a coffee, a snack, a sandwich or a hot lunch, head over to the Cafeteria on the ground floor that is open from 7:30 a.m. to 3:00 p.m. from Monday to Friday. Hot meals are available from 11:30 a.m. to 1:30 p.m.

There is a 24/7 catering area where you can buy meals to heat up in the provided microwaves or heat up your own food. Self-catering guests are welcome to eat in the restaurant and use the cutlery there.

Drinks and vending machines are also provided on every floor in the lounge areas.

### **BAGGAGE**

There is a storage room for suitcases next to the reception desk. Lockers for smaller bags are provided opposite the reception desk as well as on the first and third floor.

### **PARKING**

During the day, there is only a limited number of parking spaces available. Please inquire at the reception desk about availability. If you are training at night, a parking spot will be provided on request.

### **FIRST AID**

Trained first aid staff can be requested via the reception desk.

## **WE VALUE YOUR FEEDBACK**

As a company with a strong customer focus, we do everything we can to provide the finest service possible. Your suggestions or criticism helps us improve. We look forward to receiving your comments. Please e-mail us at [info@lat.dlh.de](mailto:info@lat.dlh.de), or visit our website [www.lufthansa-aviation-training.com](http://www.lufthansa-aviation-training.com) and use the contact form in the contact area.



# **Lufthansa** **Aviation Training**

Train smart. Fly safe.

Lufthansa Aviation Training Switzerland AG  
Cherstrasse 1  
8152 Opfikon  
Switzerland  
Phone: +41 44 564 5900  
E-mail: [info@lat.dlh.de](mailto:info@lat.dlh.de)  
[www.lufthansa-aviation-training.com](http://www.lufthansa-aviation-training.com)